



***MRL TRACTION
8 PERSON 630KG PASSENGER LIFTS EN81-20 /50***

HYDRAULIC PASSENGER LIFT WITH OR WITHOUT MACHINE ROOM CABINET



Duty	630kg 8 Person
Speed	0.52-0.63m/s
Power	415vac 3ph 50Hz 9.5-12Kw
Cabinet	2200Hx830Wx340D
Valve	Electronic with A3
Shaft Positioning	Absolute +/- 1mm



TRACTION MRL WITH FRONT WALL CABINET ALL EQUIPMENT HOUSED WITHIN THE BRUSH SATIN STAINLESS STEEL CABINET



Duty	630kg 8 Person
Speed	0.63-1m/s
Power	415vac 3ph 50Hz 4.6Kw
Cabinet	2100Hx460Wx127D
Motor type	Gearless 2:1 roping
Shaft Positioning	Absolute +/- 1mm
A3 amendment	Brake monitoring



DIAGNOSTICS PROGRAMMING/SETUP

Via SKBD or with an iPhone using Securlift "iLift" FREE to download from Istore

LIMAX II ABSOLUTE POSITIONING



SPECIAL FEATURES

- Robust measuring principal for use in demanding environments
- Resistant to dirt smoke and humidity
- Simple and flexible installation
- High degree of accuracy
- Travel lengths up to 260m
- Resolution up to 1mm
- Immediate position recognition after power failure

Technical data

Measuring principal	Absolute
Repeat accuracy	+/- 1mm
Maximum measuring length	260m
Operating temperature	-10...+70 degrees C
Protection	IP50
Supply	10-30VDC

The principle of magnetic measurement ensures a high robustness of the system. The robust magnetic band is very resistant to manual stress during assembly.

The integration with the Secur 3 through the car serial CAN bus makes the installation and the utilisation easy. Individual floors can be set from the Secur 3 keypad from the landing or on top of the lift car.

The Limax absolute positioning can be used for the following applications:

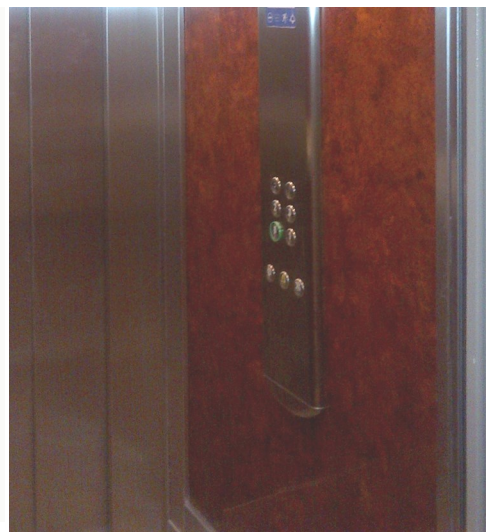
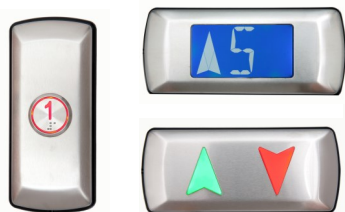
- Elevators for fireman EN81-72
- High speed ELEVATORS requiring high precision direct into floor
- Any type of installation where you do not want to use floor or deceleration magnets
- Any type of installation where you do not have to rephase after a power outage
- Direct drive

COMPACT MICRO TOUCH PUSH BUTTONS STYLISH AND DURABLE FIXTURES



TREND FIXTURES

Surface mounted fixture
Car operating panel
Landing operating panels
Hall Lanterns
Horizontal Indicators.



SLIM FIXTURES

Surface mounted fixture in brush satin stainless steel available with optional square push buttons. LED's in blue. Car operating panels Landing operating panels Hall lanterns and LCD landing indicators



EX FIXTURE

Heavy set Slim surface mounted fixture; available in brush satin and mirror polished stainless steel. LCD landing indicators Up and Down hall lanterns.

ALL FIXTURES—Can be customised to show your company Logo. Data plates with company Logo lift number and auto dialling instructions. Voice unit in English with full EN81-70 phrasing. Pre-wired auto dialler is a standard option with full preparation for customers alternative supply



SE FIXTURE

Flush mounted fixture; available in brush satin and mirror polished stainless steel (other colours considered on application). LCD

landing indicators Up and Down hall lanterns.

Available with TFT screen for the COP. (ME fixture) and **JUMBO** contrasting pushes for CARE HOMES



200 series FIXTURE

Full height column COP; available in brush satin stainless steel. LCD landing indicators Up and Down hall lanterns. Bespoke models can be produced on request



CAR FINISHINGS

Skinplate



B 6



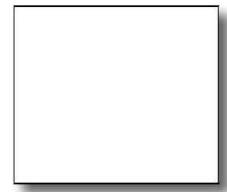
A 13



N 1



N 25 PMA



034 PMA



V14



PPS 10



PPS 12



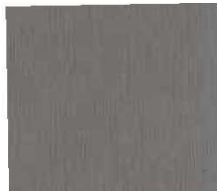
PPS 15



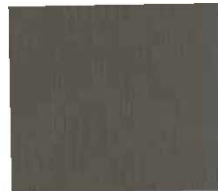
PPS 17



PPS 30



F 12 PPS



F 24 PPS

Stainless steel



AISI 304 2B
Scotch Brite



AISI 304 BA
Lino



AISI 304 BA
Dama



AISI 304 BA
2wl

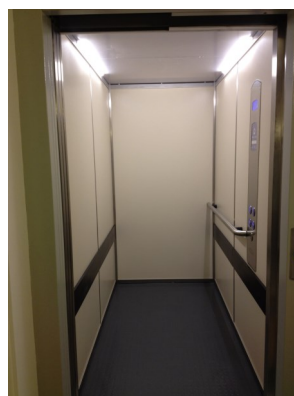
Floor covering



Black Pepper



Milk



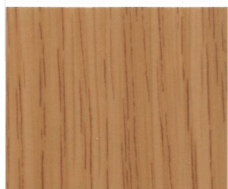
Wood finishes



7638 CALGARY MAPLE



0328 WILDERNESS PEAR



6890 DURHAM OAK



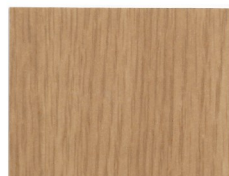
7641 JAPANESE BEECH



8007 BEECH NEW



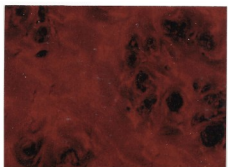
0347 DARK MAHOGONEY



8061 SHERWOOD OAK



0327 MODERN WALNUT



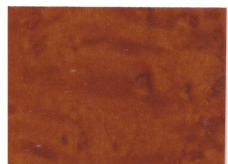
0348 BURLED MAHOGONY



7617 SEN ASH



0326 CHERRY



0349 BURLED CARAMEL WOOD



0350 FRESH BIRDSEYE



0352 BURLED AMBER WOOD



LIGHTING



LED LINEA

LED DOWN LIGHTTERS

LED DISCREET

LED CLASSIC

FLOOR FINISHES



BLACK COAL 101 *



ANTHRACITE 102 *



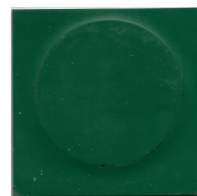
STEEL 014*



DEEP BLUE 191 *



LIMESTONE GREEN 013 *



GREEN BALZE 015



MERCURY 129



WARM RED 012



ORANGE 010



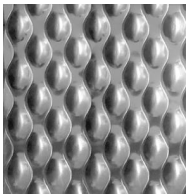
COBALT 019



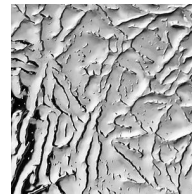
COOL BLUE 707 *



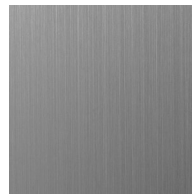
SANDSTONE 140



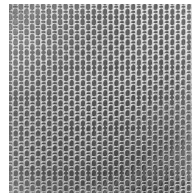
6WL Stainless CD9



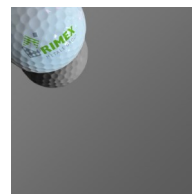
9EH CD10



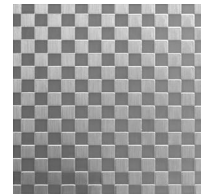
BRUSH SATIN



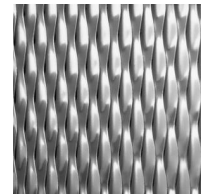
LINEN



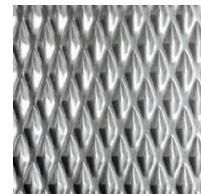
MIRROR STAINLESS



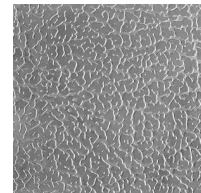
Checks CD 8



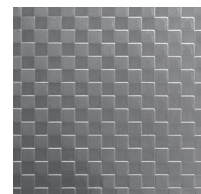
5WL Stainless CD 11



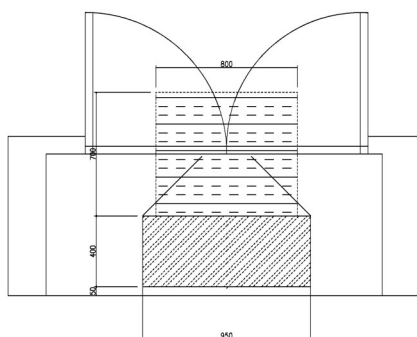
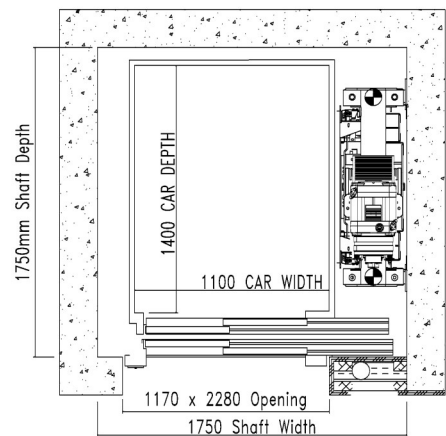
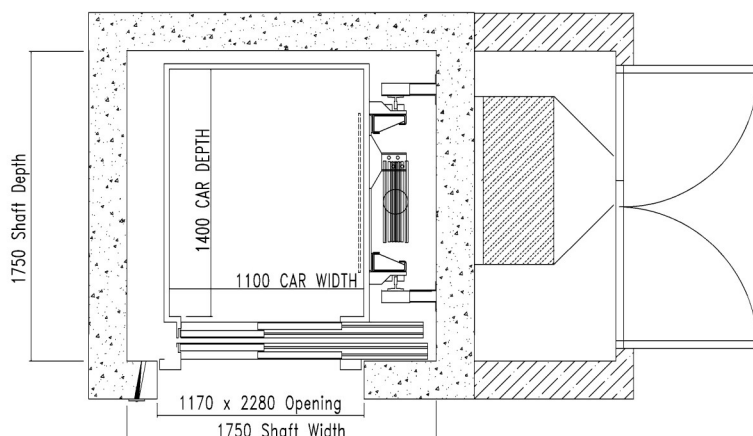
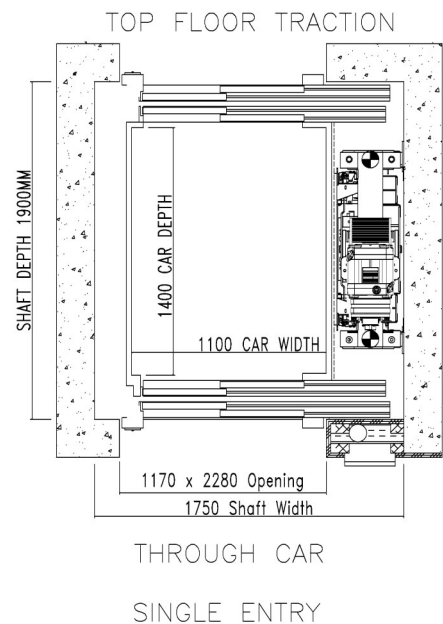
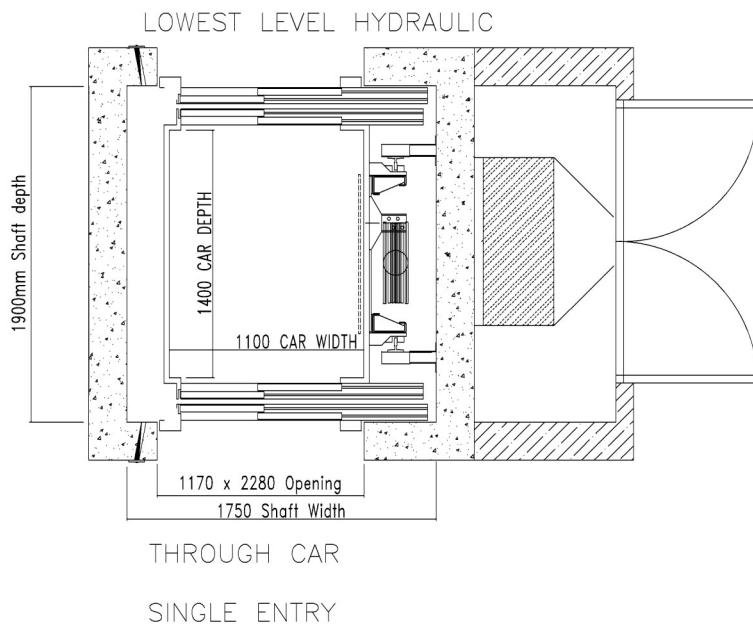
SWL STAINLESS



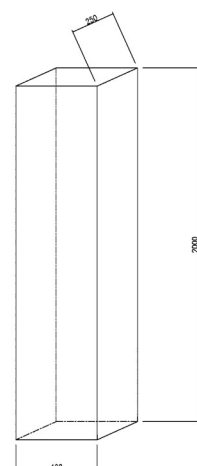
LEATHER



SQUARES



MRL MAXI CABINET



ACCUMULATOR FOR ENERGY
RECOVERY

UNIVERSAL EMERGENCY
BATTERY BACK UP

QUADRUPLEX GROUPING

8 FLOORS HYDRAULIC
32 FLOORS TRACTION

REMOTE MONITORING

SECURITY CAMERA

> 2.5 m/s

AVAILABLE IN STRUCTURE

